



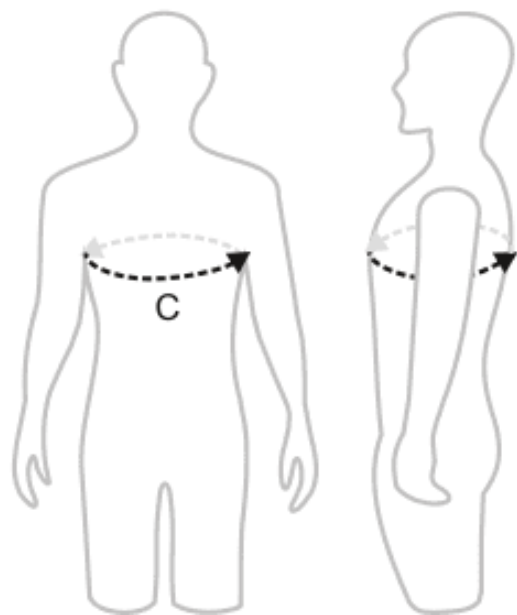
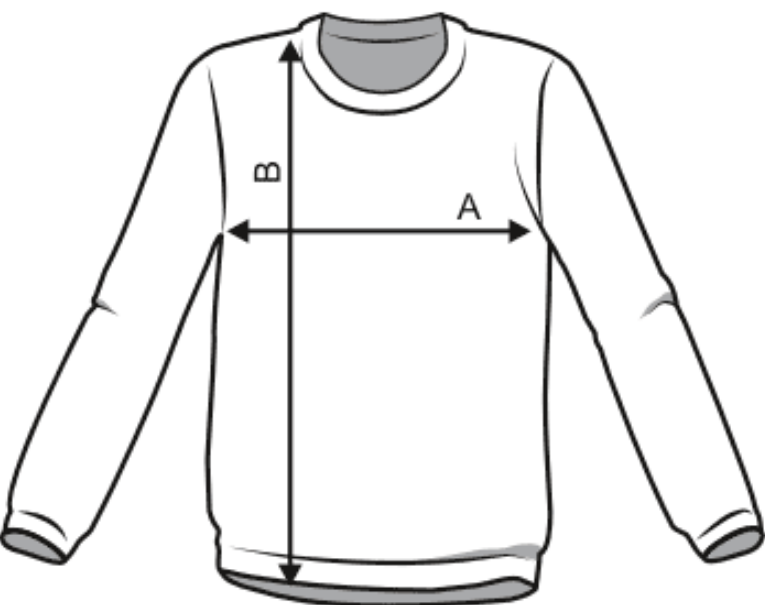
Tabele rozmiarów

Bluza Kangurka



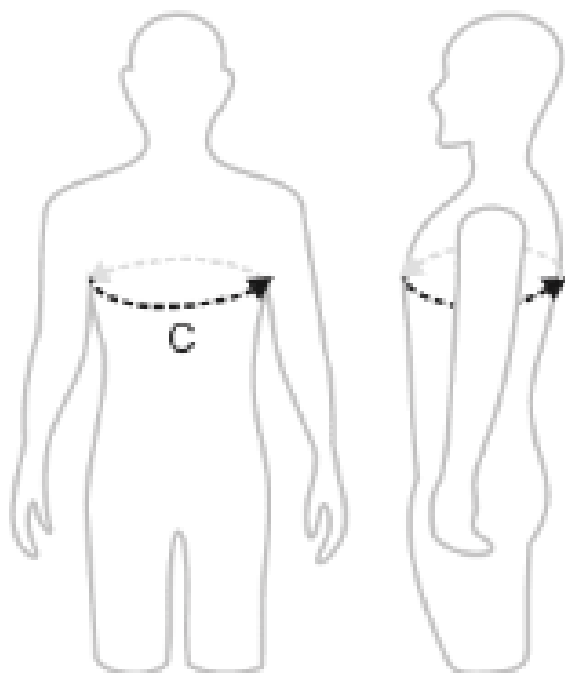
	A	B	C
XS	51	64	89
S	54	67	94
M	57	69	100
L	60	72	104
XL	63	74	110
XXL	66	77	115

Bluza Zwykła



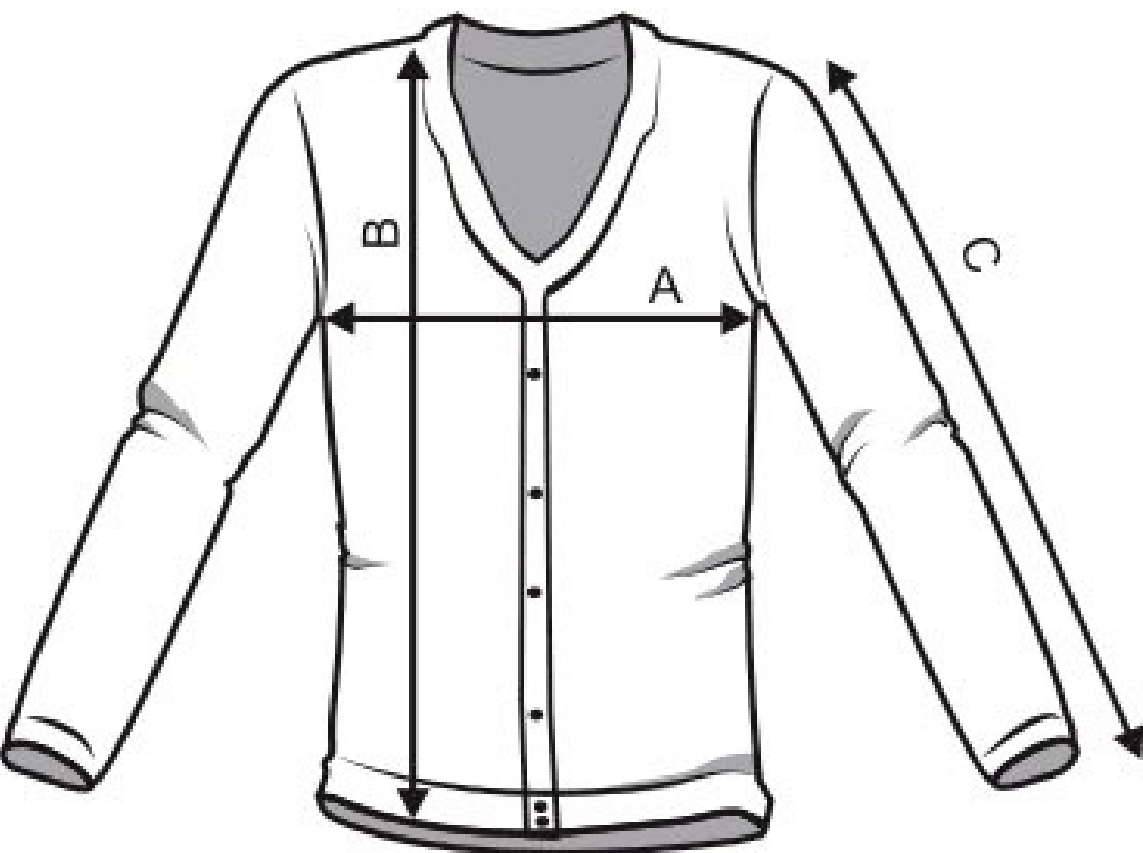
	A	B	C
XS	49 cm	66 cm	87-92 cm
S	51 cm	68,5 cm	92-97 cm
M	56 cm	71 cm	97-102 cm
L	60 cm	73,5 cm	102-107 cm
XL	63 cm	76 cm	107-112 cm
2XL	66 cm	78,5 cm	112-117 cm

Bluza Rozpinana



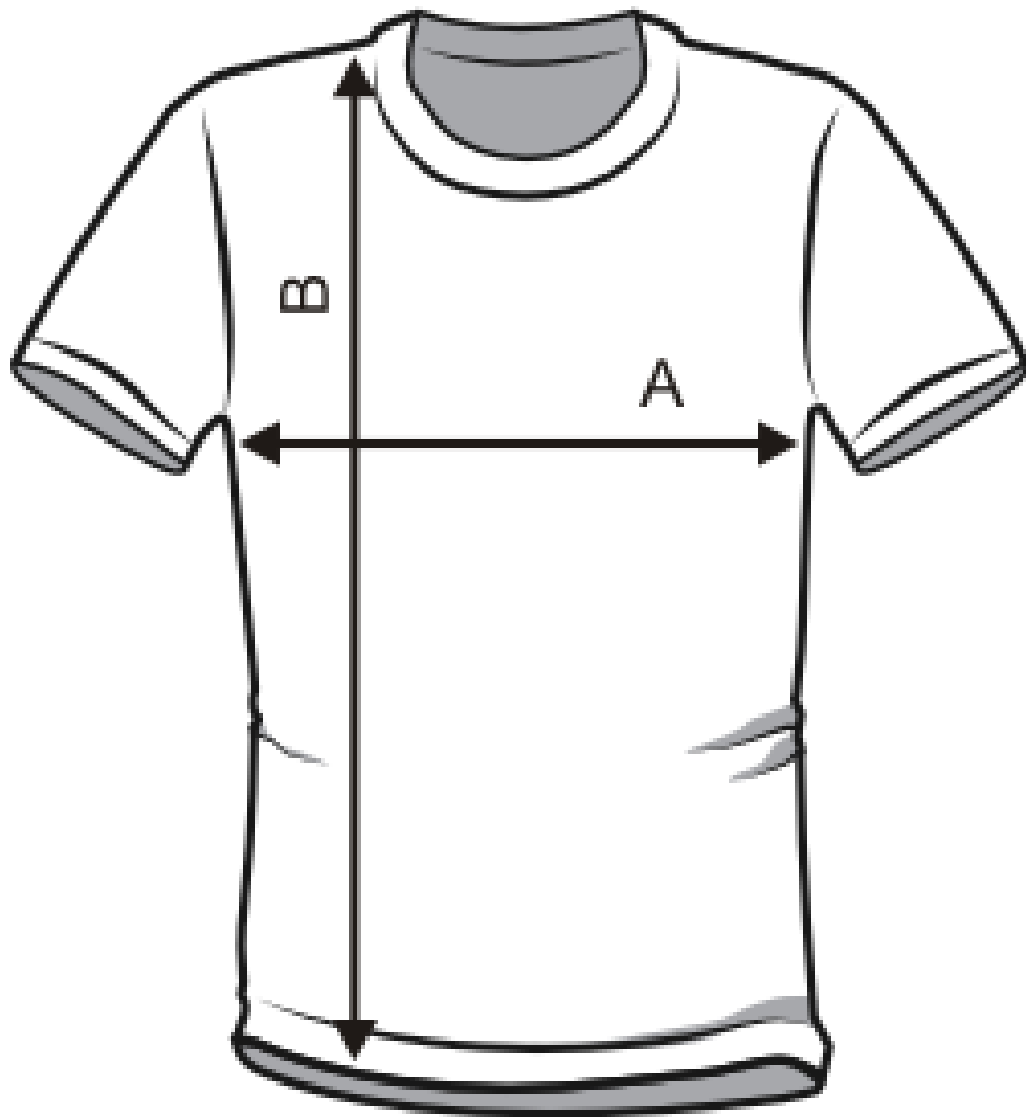
	A	B	C
XS	51	64	89
S	54	67	94
M	57	69	100
L	60	72	104
XL	63	74	110
XXL	66	77	115

Bluza Baseball



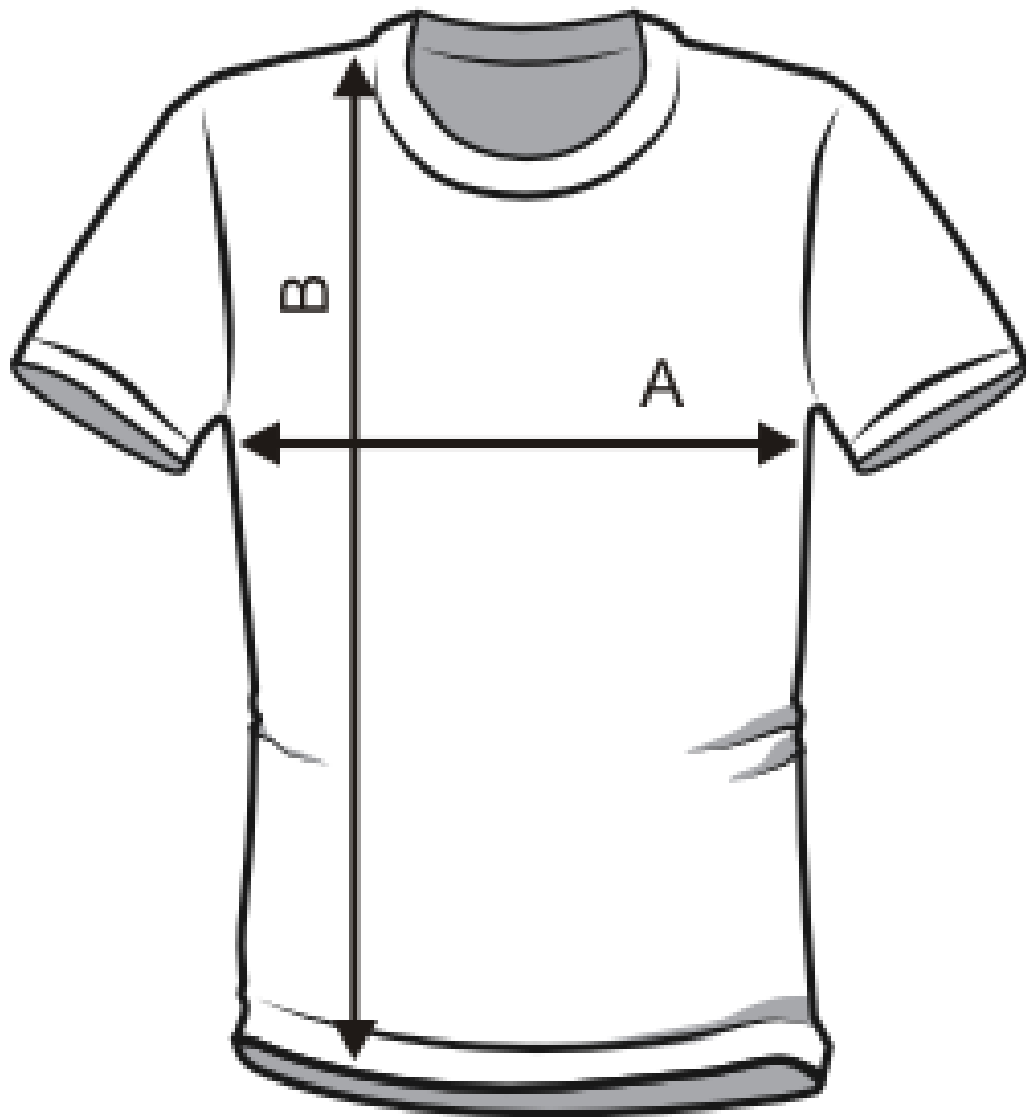
	A	B	C
XS	44	62	61
S	48	65	63
M	52	68	65
L	56	71	67
XL	60	74	69
XXL	64	77	71

T-Shirt Oversize



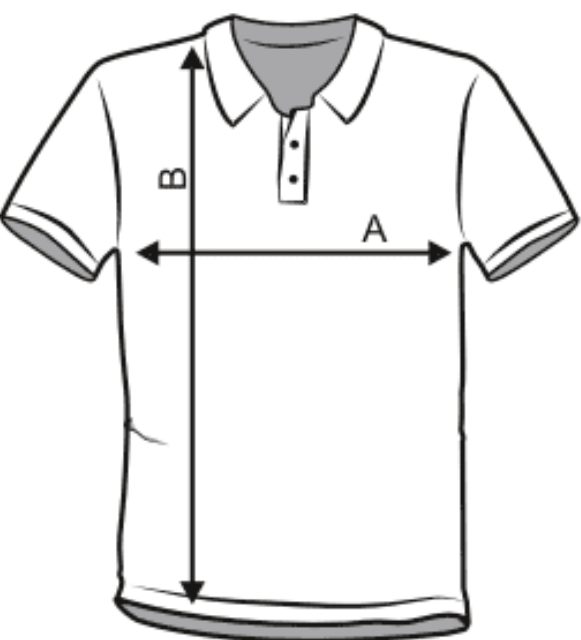
	A	B
XS	54	74
S	57	76
M	60	78
L	63	80
XL	66	82
XXL	69	84

T-Shirt

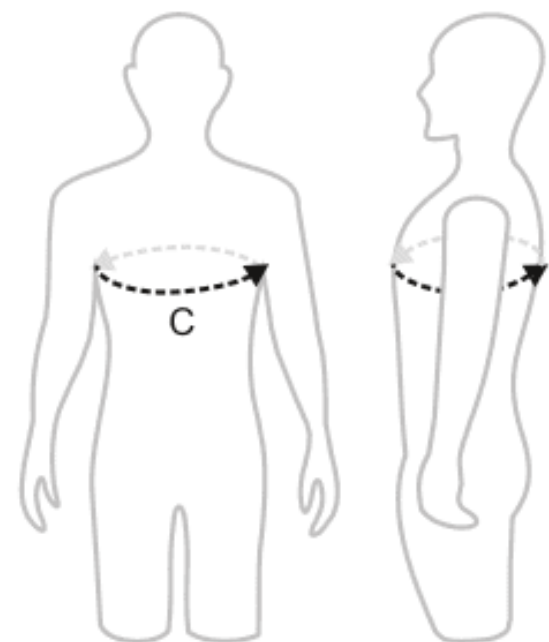


	A	B
116	36	50
128	40	56
146	42	61
XS	45	66
S	48,5	68
M	52	70
L	56	73
XL	60	76
XXL	64	79

Koszulka Polo



	A	B	C
XS	51 cm	67,5 cm	87-92 cm
S	54 cm	70 cm	92-97 cm
M	57 cm	72,5 cm	97-102 cm
L	60 cm	75 cm	102-107 cm
XL	63 cm	77,5 cm	107-112 cm

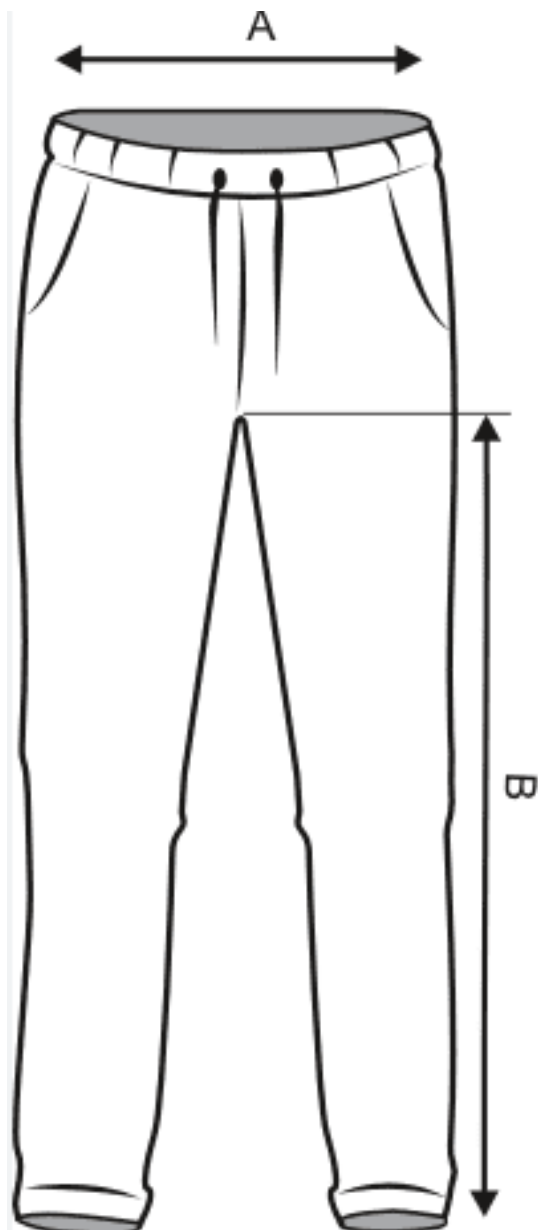


Bluza Oversize



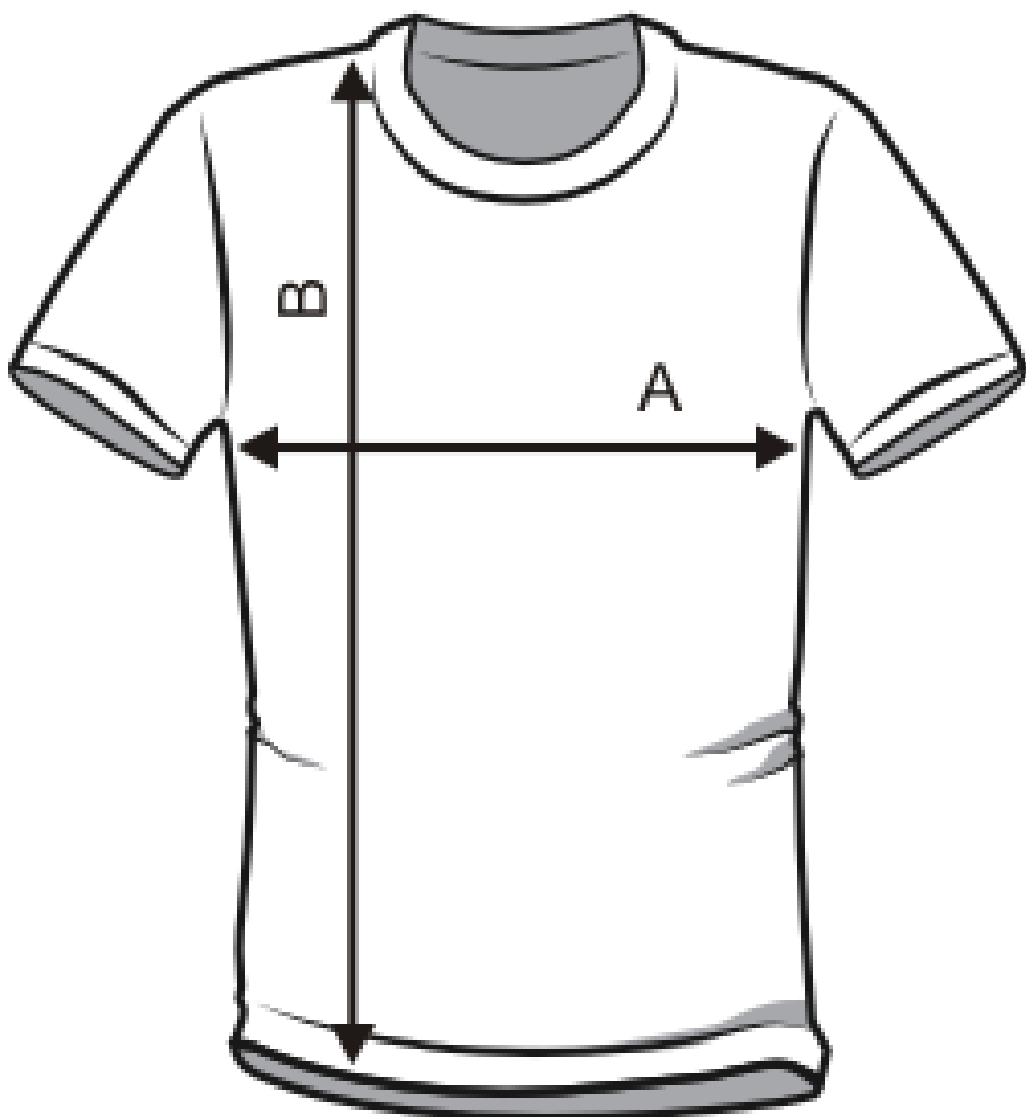
	A	B	C
S	65	70,5	71,1
M	68	71,5	71,5
L	71	73,5	71,9
XL	74	75,5	72,3
XXL	77	77,5	72,7

Spodnie Dresowe



	A	B
XS	71	78.5
S	76	79.5
M	81	80.5
L	86.5	81.5
XL	91.5	82.5
XXL	96.5	83.5

Koszulka Sportowa



	A	B
XS	45	66
S	48,5	68
M	52	70
L	56	73
XL	60	76
XXL	64	79